



The University of the West Indies

Single Virtual University Space

Presenters

Dr. Margaret Bernard

Mr. Nazir Alladin

February 7, 2011

Agenda

1. The UWI Landscape
2. Key Strategic Challenges
3. UWI Single Virtual University Space
4. Way Forward

The UWI Landscape

- Regional University
- Seventeen (17) Countries – All Sovereign States
- Four (4) Campuses
 - St. Augustine – Trinidad
 - Mona – Jamaica
 - Cave Hill – Barbados
 - Open Campus – All territories
- Student Population – 45,000

The UWI Landscape

- Seven (7) Faculties
 - Faculty of Pure & Applied Sciences
 - Faculty of Science and Agriculture
 - Faculty of Engineering
 - Faculty of Medical Sciences
 - Faculty of Social Sciences
 - Faculty of Humanities and Education
 - Faculty of Law

Key Strategic Challenges

- UWI's disseminated physical environment reflects a unique geo-political & socio-economic regional mosaic
 - inherently imbalanced distributed realities
- Lack of a physical critical mass calls for building up & capitalizing on a Virtual Critical Mass
 - economies of scale for more feasible wider and deeper reach across the physically fragmented region

Single Virtual University Space - Definition

'A common cyber-platform that consolidates and integrates the distributed technology and eLearning resources, assets, investments and elements of UWI to facilitate and enhance the seamless communication, management, exchange and flow of knowledge and information residing at or shared by the different nodes throughout the university's disseminated physical environment'

Strategic Repositioning Elements

UWI's bold strategic repositioning moves to enhance value proposition to the region

- **Open Campus as structural reform**

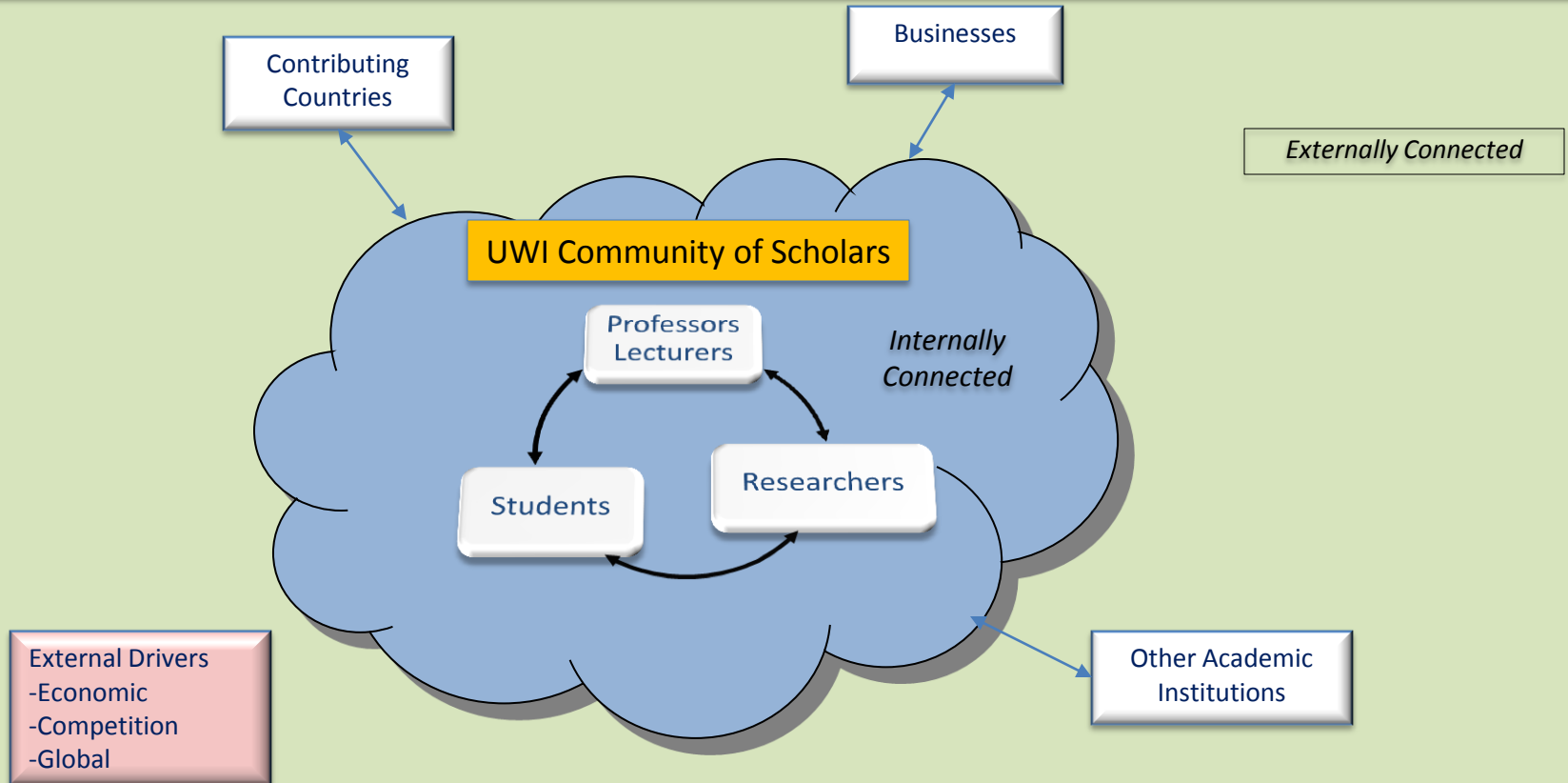
- Consolidates diverse outreach structures under one umbrella
- Can transform into more than the sum of its merged parts
- Perceived as an institutional **EXTENSION STRUCTURE**

- **Single Virtual University Space as operational reform**

- Consolidates Distributed ICT & ODL operations on one cyber-platform
- Perceived as an institutional **EXTENSION MEDIUM**

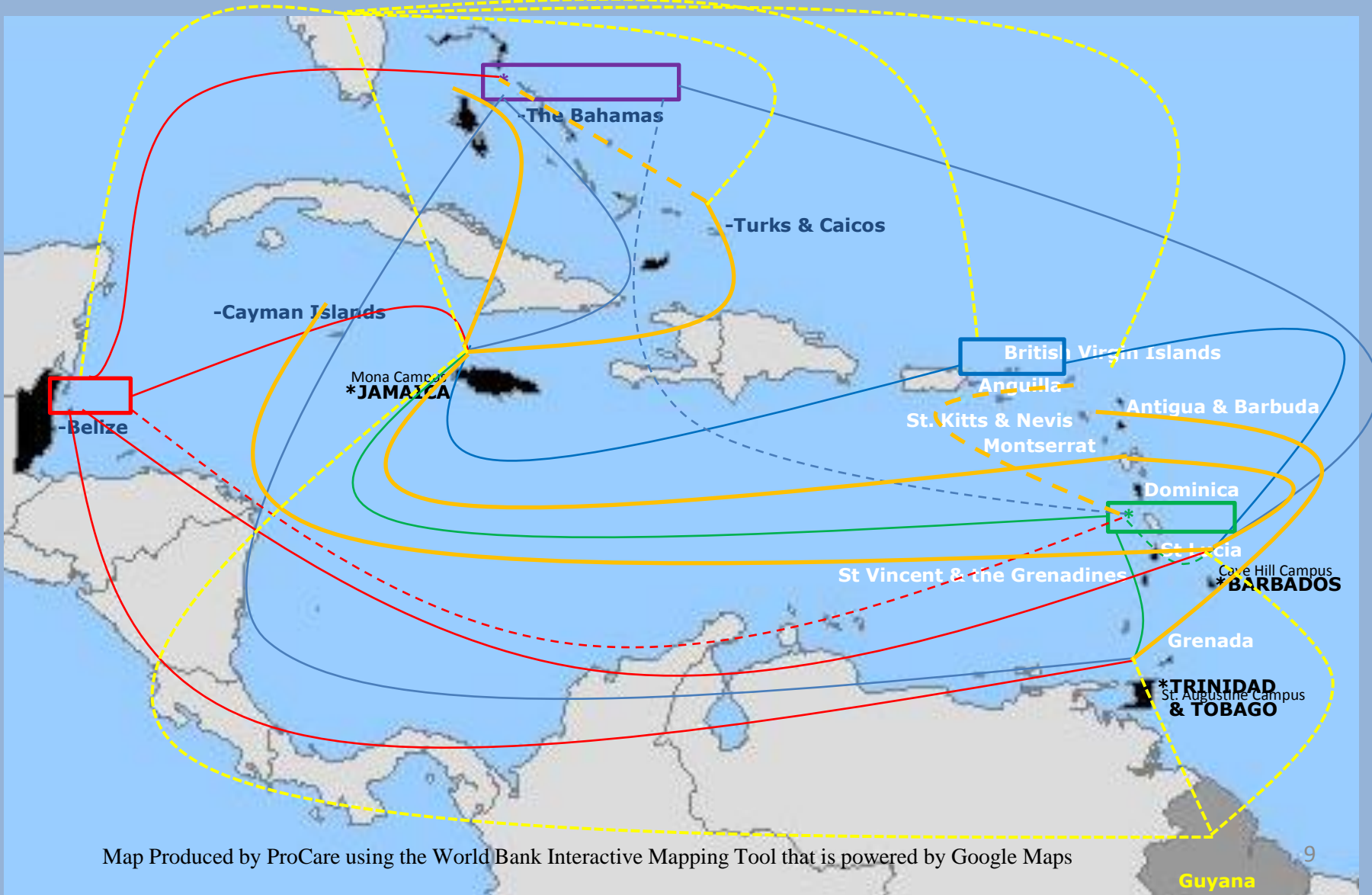
Connected University

SVUS is technological enabler that will connect UWI and each of its four campuses both internally and externally



QUANTUM LEAP : Main Proposition

A student from anywhere in the Caribbean is able to enrol from the convenience of ones own home country in courses offered anywhere by UWI &/or any its Caribbean or International partners



QUANTUM LEAP : SVUS as an Extension Medium

- Facilitates delivery of a larger number of a larger variety of joint offerings, programs & services
 - Flowing from any point to another through an all-encompassing cyber-platform
 - Expanding regional tertiary enrolment & delivery capacities
(directly and by proxy)
- Harmonizes & integrates a unified UWI that is better-connected to a more vibrant multilateral community of scholars in the region
 - Making UWI more connected “anywhere & anytime” by seamless inter-campus & extramural relations
 - Creating institutional synergies that change UWI’S internal and external competitive

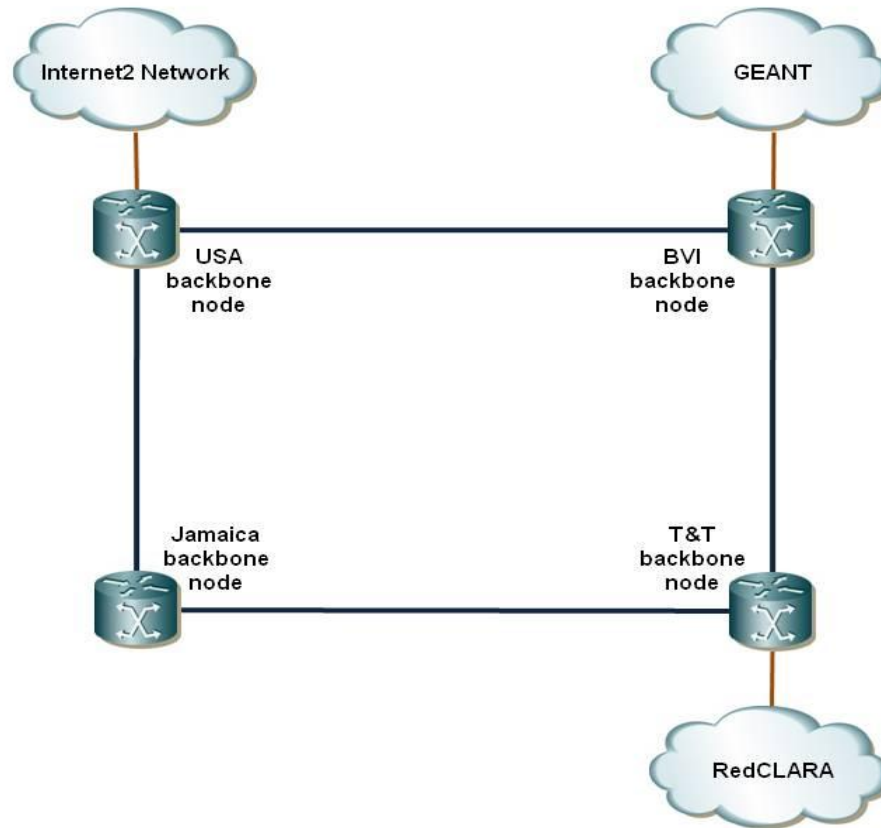
QUANTUM LEAP: Open Campus as Extension Structure

- **Runs locally-based one-stop shops throughout the region**
 - for all or most off-campus students enrolling in programs & courses from any Campus &/or TLI partner
- **Expands presence & outreach in non-campus territories**
 - extending the regional reach of the 3 content-providing campuses
- **Increases regional delivery capacities and access levels**
 - by proxy, through a universe of institutions in the Caribbean and beyond

Way Forward - UWI Infrastructure

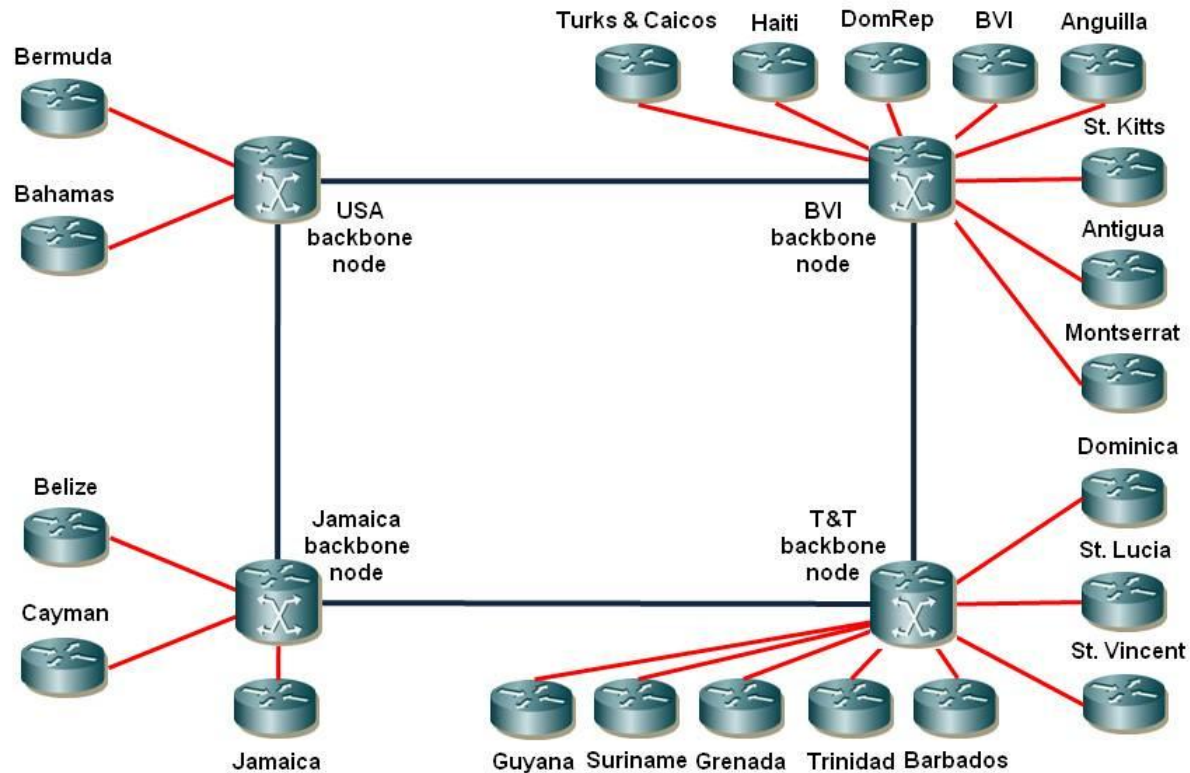
- Culture Transformational Change
- Consolidate & Integrate the distributed Technology and eLearning resources, assets, investments
- Facilitate and enhance Seamless Communication, exchange flow and management of knowledge
- Use Learning Management Systems, Video technologies, Web-based synchronous communication, multimedia classrooms
- Knowledge Resources – virtual Library, research support

Way Forward - CKLN / NKLN / CaribNet



Way Forward - CKLN / NKLN / CaribNet

Connectivity graph





The University of the West Indies

Single Virtual University Space

Thank You

February 7, 2011